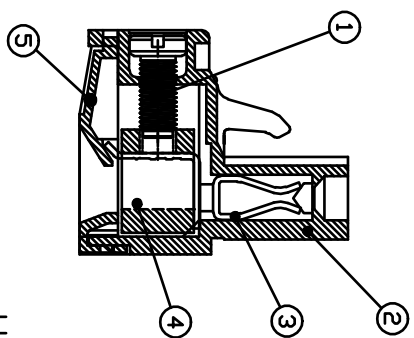
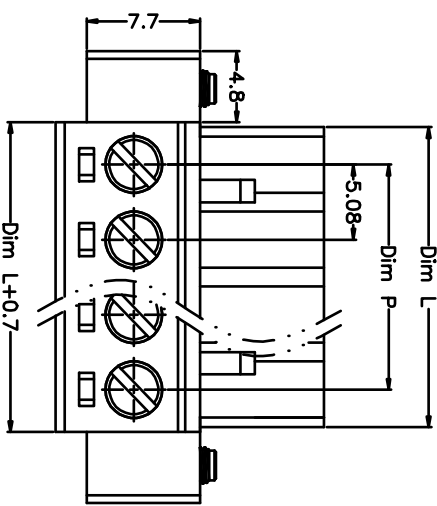
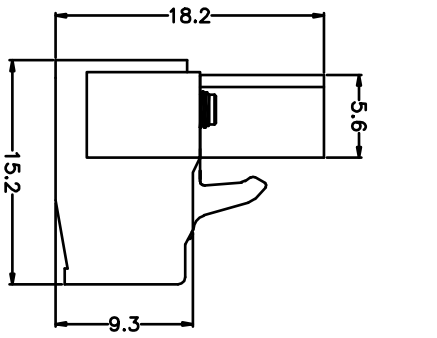
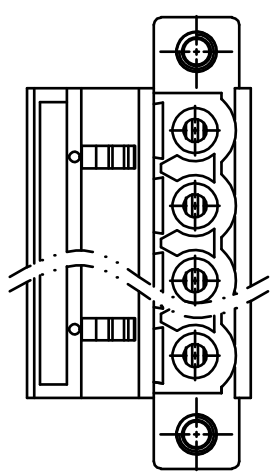


REV.	DESCRIPTION	DATE	DRAWN	APPROVED
A1	DWG.REL	2016/10/7	FANG	YANG



N=Number of Poles
Dim P=(N-1)x5.08
Dim L=Nx5.08

Poles	Dim P	Dim L
2-6P	±0.10	±0.15
7-12P	±0.20	±0.20
13-18P	±0.25	±0.30
19-24P	±0.30	±0.40

GENERAL TOLERANCE	ANGLE TOLERANCE
X. ±0.5	X. ±5'
.X ±0.3	.X' ±3'
.XX ±0.1	.XX' ±1'

DRAWING TYPE	CUSTOMER
SCALE	1:1
DRAWING NO.	XP0012016-xxxx

PROJECTION	TITLE
UNITS mm	KF222M-5.08-XXP
SHEET SIZE A4	SERIES KF222M

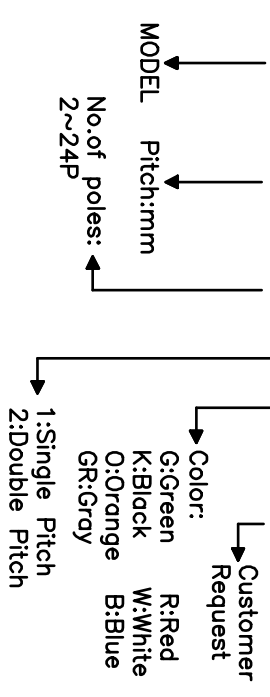
- Material
 - ①Screws : M2.5 steel, Zinc plated,“-” slot type
 - ②Housing : PA66, UL94V-0
 - ③Contact : Phosphor bronze, Ni plated
 - ④Clamp : Brass, Ni plated
 - ⑤Cover : PA66, UL94V-0

- Electrical UL IEC
 - Rated voltage : 300V 320V
 - Rated current : 15A 20A
 - Insulation resistance: 500MΩ/DC500V
 - Withstanding Voltage : AC2000V/1min
 - Wire range: 28-12AWG 2.5mm²

- Mechanical
 - Operating temperature:-40°C~+105°C
 - Soldering temperature:250°C±5/5sec
 - Torque: 0.4N.m (3.54Lb.in)
 - Strip length: 7-8mm

HOW TO ORDER

KF222M-5.08-XXP-1 X-XXXXX



凯峰电子有限公司
KAIFENG ELECTRONIC CO.,LTD

CIXI KAIFENG ELECTRONIC CO.,LTD