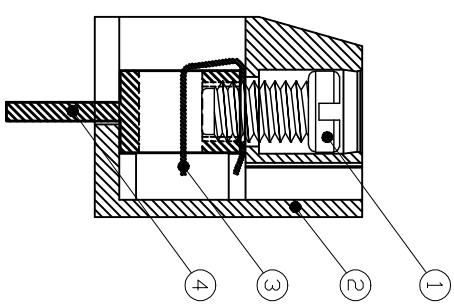
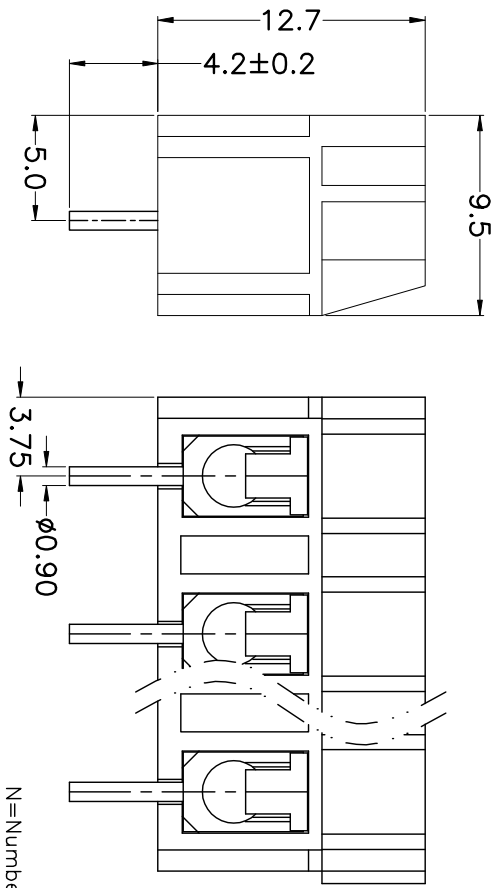
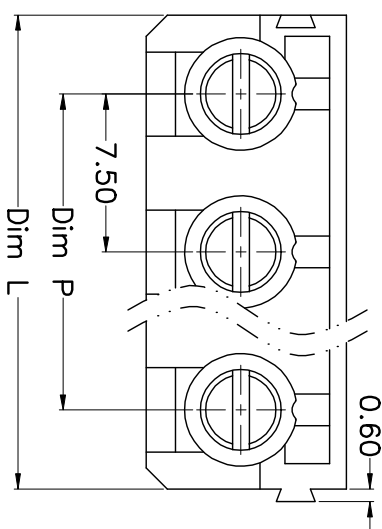


REV.	DESCRIPTION	DATE	DRAWN	APPROVED
A1	DWG.REL	2016/10/7	FANG	YANG



- Material
 - ①Screws : M3.0 steel, Zinc plated,
 - “-” slot type
 - ②Housing : PA66, UL94V-0
 - ③Reed : Phosphor bronze, Ni plated or stainless steel
 - ④Pin header : Brass, Tin plated

- Electrical

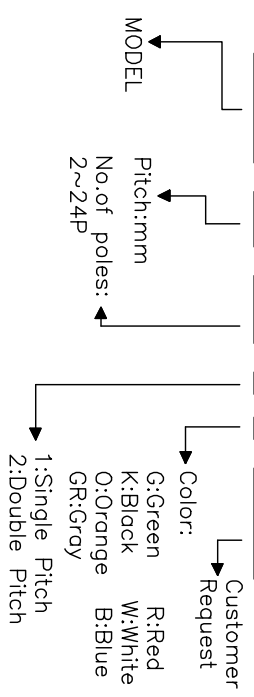
UL	IEC
Rated voltage : 300V	450V
Rated current : 16A	24A

Insulation resistance: 500MΩ/DC500V
 Withstanding Voltage : AC2500V/1min
 Wire range: 22-14AWG 2.5mm²

- Mechanical
 - Operating temperature: -30°C~+105°C
 - Soldering temperature: 250°C±5/5sec
 - Torque: 0.5N.m (4.43lb.in)
 - Strip length: 4.5-5mm

HOW TO ORDER

KF360-7.5-XXP-1 X-XXXXXX



N=Number of Poles
 Dim A P=(N-1)x7.50
 Dim L=L=Nx7.50

Poles	Dim P	Dim L
2-6P	±0.10	±0.15
7-12P	±0.20	±0.20
13-18P	±0.25	±0.30
19-24P	±0.30	±0.40

GENERAL TOLERANCE ANGLE TOLERANCE

X.	±0.5	X.	±5'
.X	±0.3	.X'	±3'
.XX	±0.1	.XX'	±1'

DRAWING TYPE	CUSTOMER	SHEET	1 OF 1
SCALE	1:1		
DRAWING NO.	XP0012016-xxxx		

PROJECTION	UNIT	TITLE
1:1	mm	KF360-7.5-XXP
SHEET SIZE	A4	SERIES
		KF360

KALTRON ELECTRONIC **凯峰电子有限公司**
 CIXI KAIFENG ELECTRONIC CO.,LTD

P.C.B.LAYUOT

