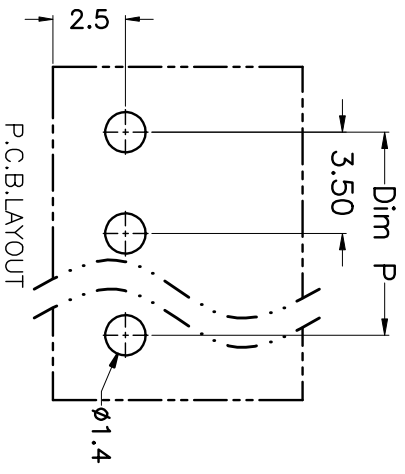
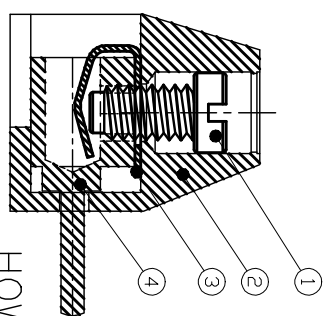
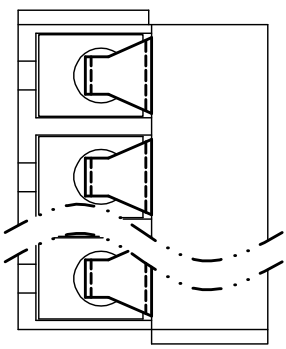
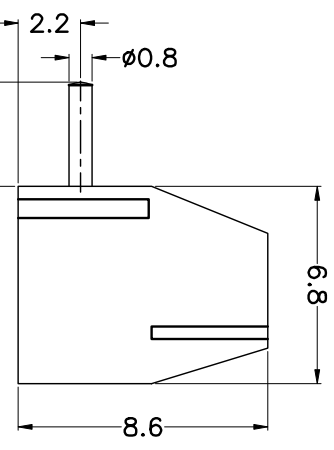
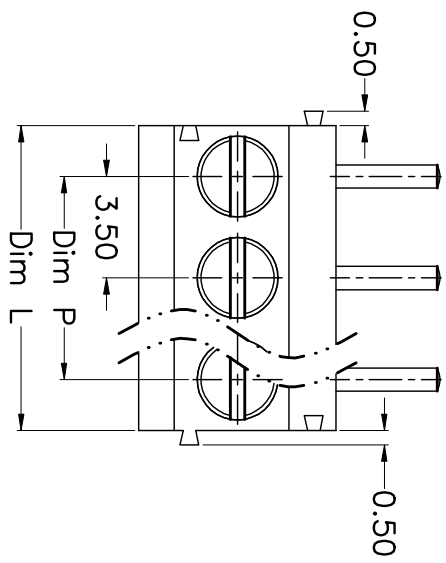


| REV. | DESCRIPTION | DATE | DRAWN | APPROVED |
|------|-------------|-----------|-------|----------|
| A1 | DWG.REL | 2016/10/7 | FANG | YANG |



N=Number of Poles
 Dim P=(N-1)×3.50
 Dim L=N×3.50

| Poles | Dim P | Dim L |
|--------|-------|-------|
| 2-6P | ±0.10 | ±0.15 |
| 7-12P | ±0.20 | ±0.20 |
| 13-18P | ±0.25 | ±0.30 |
| 19-24P | ±0.30 | ±0.40 |

GENERAL TOLERANCE ANGLE TOLERANCE

| | | | |
|-----|------|------|-----|
| X. | ±0.5 | X. | ±5° |
| .X | ±0.3 | .X. | ±3° |
| .XX | ±0.1 | .XX. | ±1° |

| | | | |
|--------------|----------------|-------|--------|
| DRAWING TYPE | CUSTOMER | SHEET | 1 OF 1 |
| SCALE | 1:1 | | |
| DRAWING NO. | XP0012016-xxxx | | |

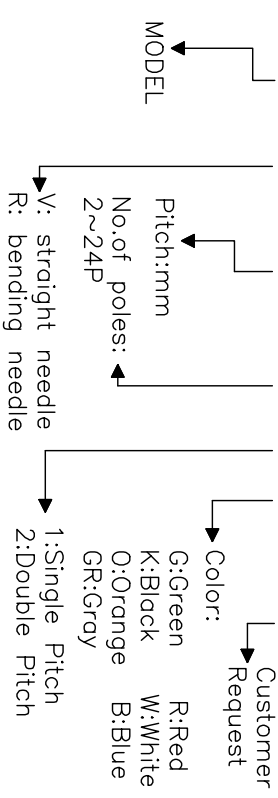
- Material
 - ØScrews : M2.0 steel, Zinc plated,
 - “-” slot type
 - ØHousing : PA66, UL94V-0
 - ØReed : Phosphor bronze, Ni plated or stainless steel
 - ØPin header : Brass, Tin plated

- Electrical UL IEC
 - Rated voltage : 300V 130V
 - Rated current : 16A 10A
 - Insulation resistance: 500MΩ/DC500V
 - Withstanding Voltage : AC1250V/1min
 - Wire range: 24-18AWG 1.0mm²

- Mechanical
 - Operating temperature: -40°C~+105°C
 - Soldering temperature: 250°C±5/5sec
 - Torque: 0.2N.m (1.77Lb.in)
 - Strip length: 5-6mm

HOW TO ORDER

KF350 R - 3.5 - XXP - 1 X - XXXXX



| PROJECTION | TITLE |
|------------|----------------|
| UNITS | KF350R-3.5-XXP |
| SHEET SIZE | A4 |
| SERIES | KF350R |

KF 慈溪市凯峰电子有限公司
 KAIFENG ELECTRONIC CIXI KAIFENG ELECTRONIC CO.,LTD