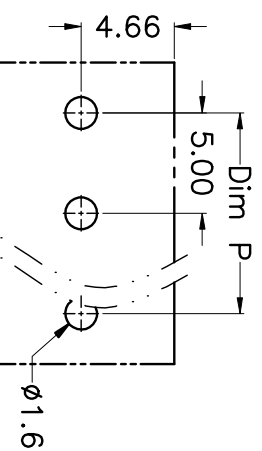
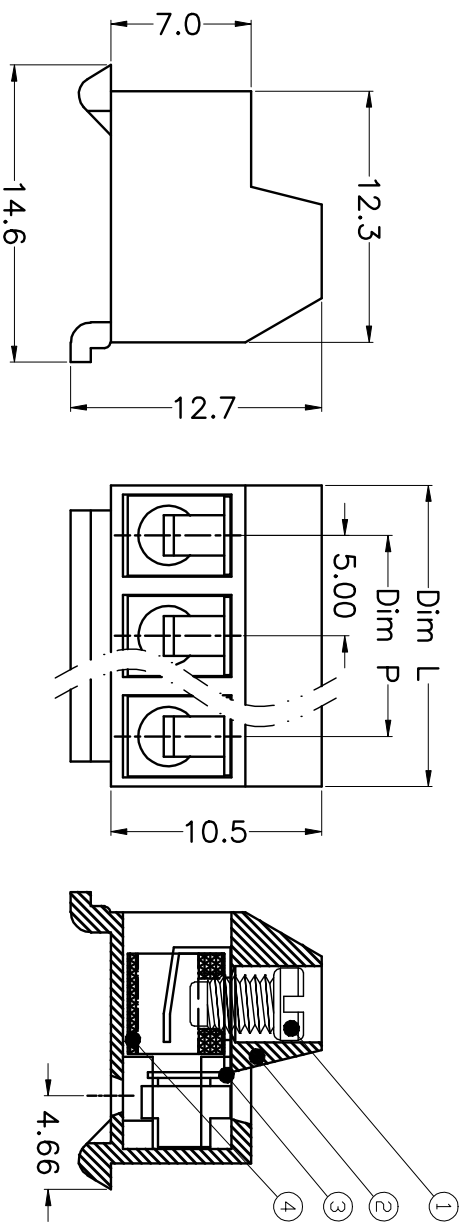
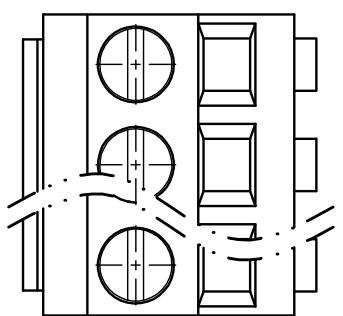


REV.	DESCRIPTION	DATE	DRAWN	APPROVED
A1	DWG.REL	2016/10/7	FANG	YANG



N=Number of Poles  
 Dim P=(N-1)×5.00  
 Dim L=N×5.00

Poles	Dim P	Dim L
2-6P	±0.10	±0.15
7-12P	±0.20	±0.20
13-18P	±0.25	±0.30
19-24P	±0.30	±0.40

GENERAL TOLERANCE ANGLE TOLERANCE

X.	±0.5	X.	±5°
.X	±0.3	.X.	±3°
.XX	±0.1	.XX.	±1°
DRAWING TYPE	CUSTOMER	SCALE	1:1
DRAWING NO.	XP0012016-xxxx	SHEET	1 OF 1

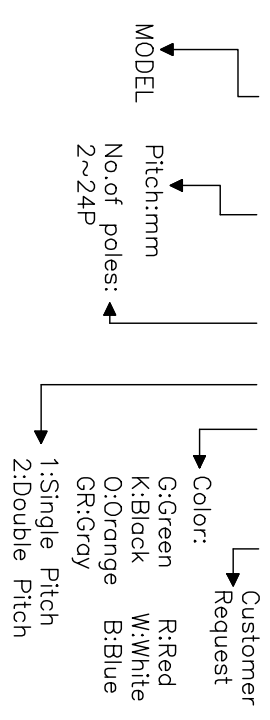
- Material
  - ①Screws : M3.0 steel, Zinc plated,
  - “-” slot type
  - ②Housing : PA66, UL94V-0
  - ③Reed : Phosphor bronze, Ni plated
  - or stainless steel
  - ④Pin header : Brass, Tin plated

- Electrical
  - UL IEC
  - Rated voltage : 300V 250V
  - Rated current : 10A 24A
  - Insulation resistance: 500MΩ/DC500V
  - Withstanding Voltage : AC2000V/1min
  - Wire range: 28-14AWG 2.5mm<sup>2</sup>

- Mechanical
  - Operating temperature: -40°C±105°C
  - Soldering temperature: 250°C±5/5sec
  - Torque: 0.5N.m (4.43lb.in)
  - Strip length: 5-6mm

HOW TO ORDER

KF332-A-5.0-XXP-1 X-XXXXX



PROJECTION	TITLE
UNITS mm	KF332-A-5.0-XXP
SHEET SIZE A4	SERIES KF332-A

**KF 慈溪市凯峰电子有限公司**  
 KAIFENG ELECTRONIC CIXI KAIFENG ELECTRONIC CO.,LTD