

REV.	DESCRIPTION	DATE	DRAWN	APPROVED
A1	DWG.REL	2016/10/7	FANG	YANG

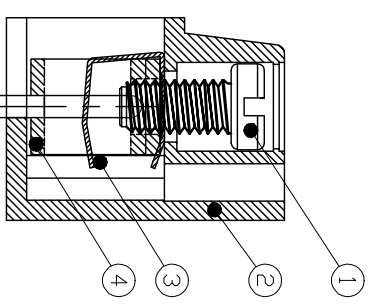
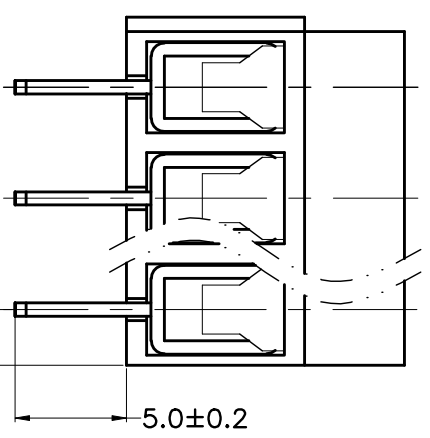
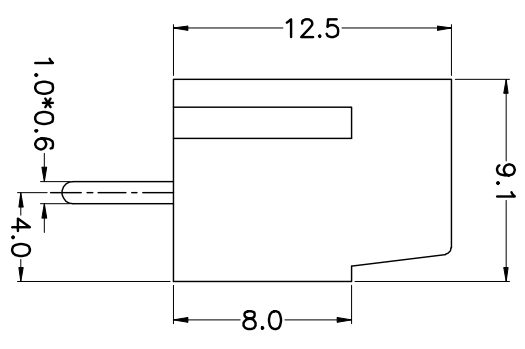
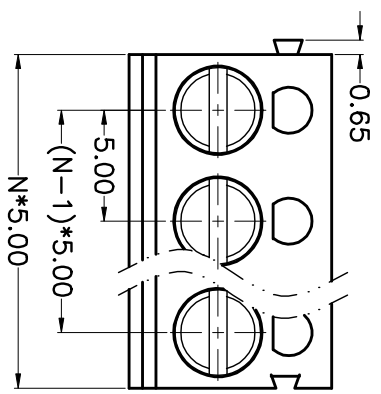
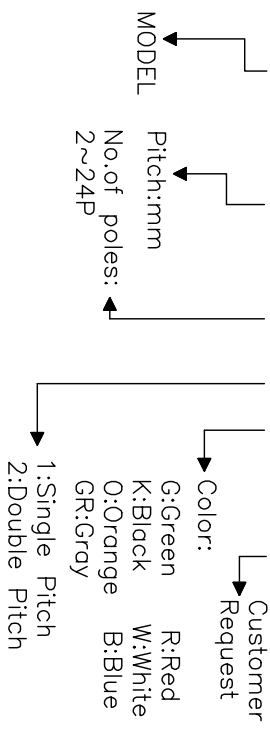
- Material
 - ① Screws : M2.5 steel, Zinc plated,
 - ② “-/+” slot type
 - ③ Housing : PA66, UL94V-0
 - ④ Reed : Phosphor bronze, Ni plated or stainless steel
 - ⑤ Pin header : Brass, Tin plated

- Electrical UL IEC
 - Rated voltage : 300V 250V
 - Rated current : 12A 20A
 - Insulation resistance: 500MΩ/DC500V
 - Withstanding Voltage : AC2000V/1min
 - Wire range: 22-14AWG 2.5mm²

- Mechanical
 - Operating temperature: -30℃ to +120℃
 - Soldering temperature: 250℃ ±5/5sec
 - Torque: 0.4N.m (3.54Lb.in)
 - Strip length: 4.5-5mm

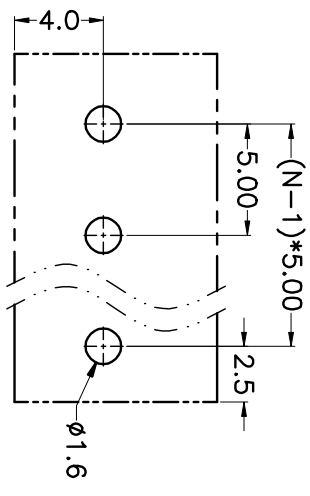
HOW TO ORDER

KF305-5.0-XXP-1 X-XXXXX



N=Number of Poles
Dim P=(N-1)*5.00
Dim L=N*5.00

Poles	Dim P	Dim L
2-6P	±0.10	±0.15
7-12P	±0.20	±0.20
13-18P	±0.25	±0.30
19-24P	±0.30	±0.40



GENERAL TOLERANCE ANGLE TOLERANCE

X.	±0.5	X.	±5'
.X	±0.3	.X.	±3'
.XX	±0.1	.XX.	±1'

DRAWING TYPE	CUSTOMER	SHEET	1 OF 1
SCALE	1:1		
DRAWING NO.	XP0012016-xxxx		

PROJECTION	UNIT	TITLE
mm	mm	KF305-5.0-XXP
SHEET SIZE	A4	SERIES
		KF305

KF 慈溪市凯峰电子有限公司
KAIFENG ELECTRONIC CIXI KAIFENG ELECTRONIC CO.,LTD