

REV.	DESCRIPTION	DATE	DRAWN	APPROVED
A1	DWG.REL	2016/10/7	FANG	YANG

- Material
 - ①Screws : M2.5 steel, Zinc plated,
 - “_” slot type
 - ②Housing : PA66, UL94V-0
 - ③Clamp : steel, Zinc plated
 - ④Pin header : Brass, Tin plated

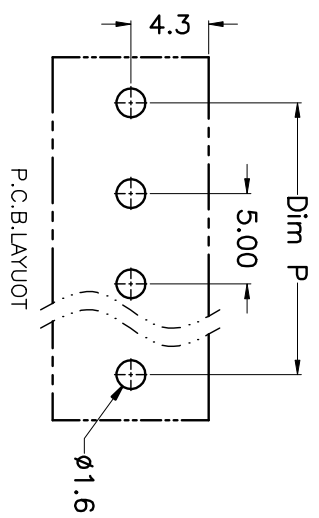
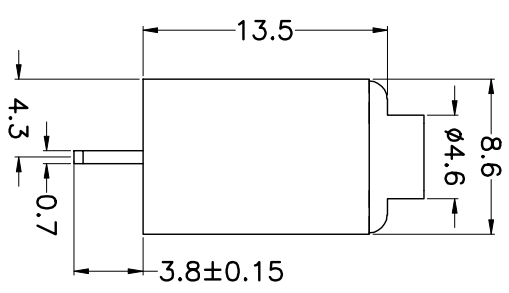
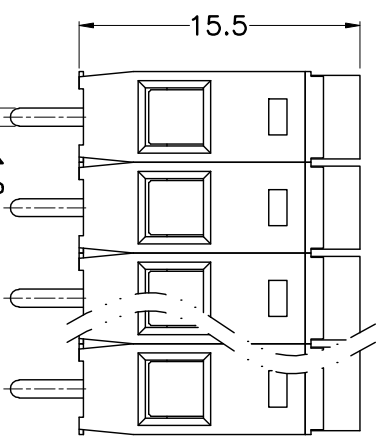
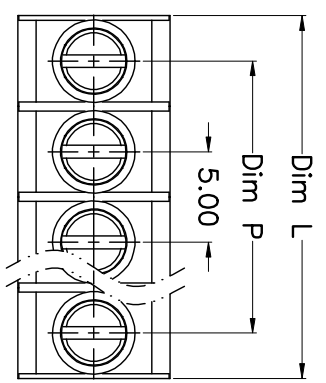
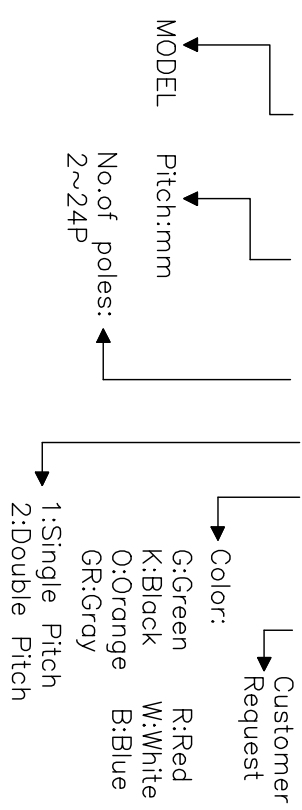
- Electrical

UL	IEC
Rated voltage : 300V	250V
Rated current : 15A	22A
Insulation resistance: 500MΩ/DC500V	
Withstanding Voltage : AC2000V/1min	
Wire range: 22-14AWG	0.5-2.5mm ²

- Mechanical
 - Operating temperature: -40°C ~ +105°C
 - Soldering temperature: 250°C ± 5 / 5sec
 - Torque: 0.4N.m (3.54Lb.in)
 - Strip length: 5-6mm

HOW TO ORDER

KF169-5.0-XXP-1 X-XXXXXX



N=Number of Poles
Dim P=(N-1)x5.00
Dim L=Nx5.00

Poles	Dim P	Dim L
2-6P	±0.10	±0.15
7-12P	±0.20	±0.20
13-18P	±0.25	±0.30
19-24P	±0.30	±0.40

GENERAL TOLERANCE	ANGLE TOLERANCE	TOLERANCE
X: ±0.5 X: ±0.3 .XX ±0.1	X: X' X: X' .XX' ±1'	±5' ±3' ±1'
DRAWING TYPE: CUSTOMER	SHEET: 1 OF 1	
SCALE: 1:1		
DRAWING NO.: XP0012016-xxxx		

PROJECTION	TITLE
mm	KF169-5.0-XXP
SHEET SIZE	SERIES
A4	KF169

KF 慈溪市凯峰电子有限公司
KAIFENG ELECTRONIC CIXI KAIFENG ELECTRONIC CO.,LTD