

REV.	DESCRIPTION	DATE	DRAWN	APPROVED
A1	DWG.REL	2016/10/7	FANG	YANG

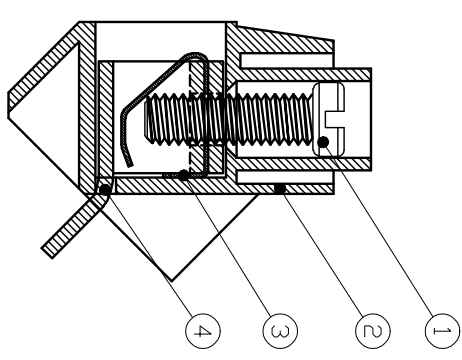
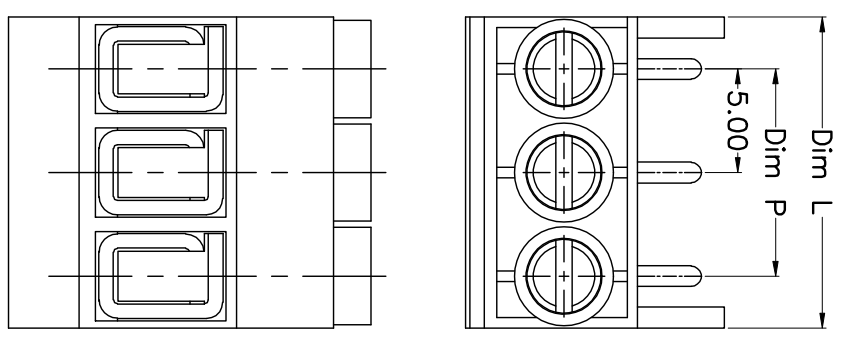
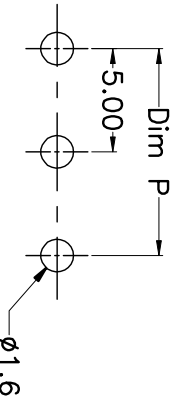
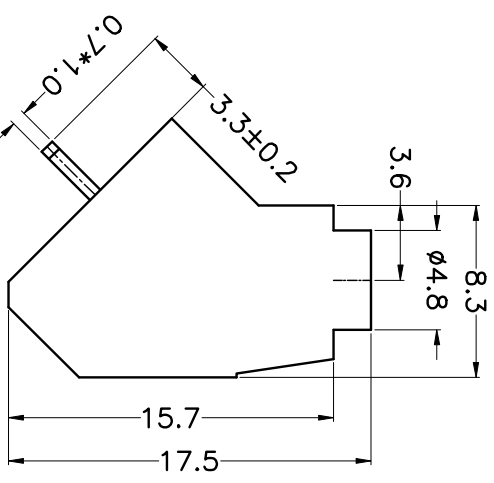
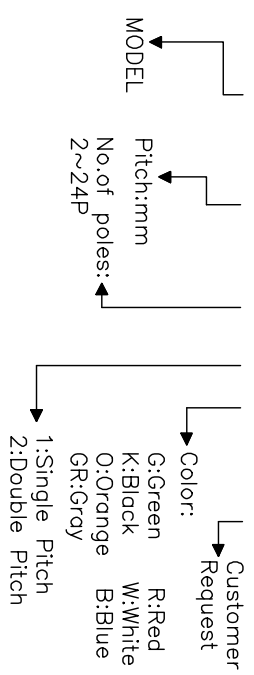
- Material
 ①Screws : M2.5 steel, Zinc plated,
 “-” slot type
 ②Housing : PA66, UL94V-0
 ③Reed : Phosphor bronze, Ni plated
 or stainless steel
 ④Pin header : Brass, Tin plated

- Electrical
 UL IEC
 Rated voltage : 300V 250V
 Rated current : 15A 22A
 Insulation resistance: 500MΩ/DC500V
 Withstanding Voltage : AC2000V/1min
 Wire range: 22-14AWG 2.5mm²

- Mechanical
 Operating temperature: -40℃~+105℃
 Soldering temperature: 250℃±5/5sec
 Torque: 0.4N.m (3.54Lb.in)
 Strip length: 5-6m

HOW TO ORDER

KF168-5.0-XXP-1 X-XXXXX



N=Number of Poles
 Dim P=(N-1)x5.00
 Dim L=Nx5.00

Poles	Dim P	Dim L
2-6P	±0.10	±0.15
7-12P	±0.20	±0.20
13-18P	±0.25	±0.30
19-24P	±0.30	±0.40

GENERAL TOLERANCE	ANGLE TOLERANCE	±5'
X. ±0.5	X. ±3'	±5'
.X ±0.3	.X ±3'	±3'
.XX ±0.1	.XX ±1'	±1'
DRAWING TYPE	CUSTOMER	
SCALE	1:1	SHEET 1 OF 1
DRAWING NO.	XP0012016-xxxx	

PROJECTION	TITLE
UNITS mm	KF168-5.0-XXP
SHEET SIZE A4	SERIES KF168

KALTRON ELECTRONIC **慈溪市凯峰电子有限公司**
 CIXI KAIFENG ELECTRONIC CO.,LTD