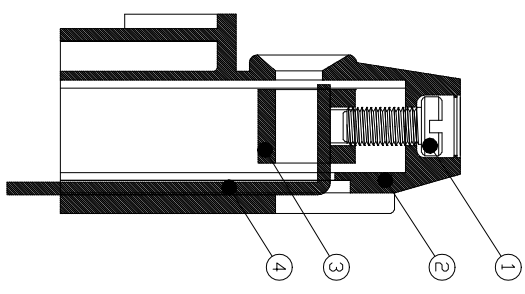
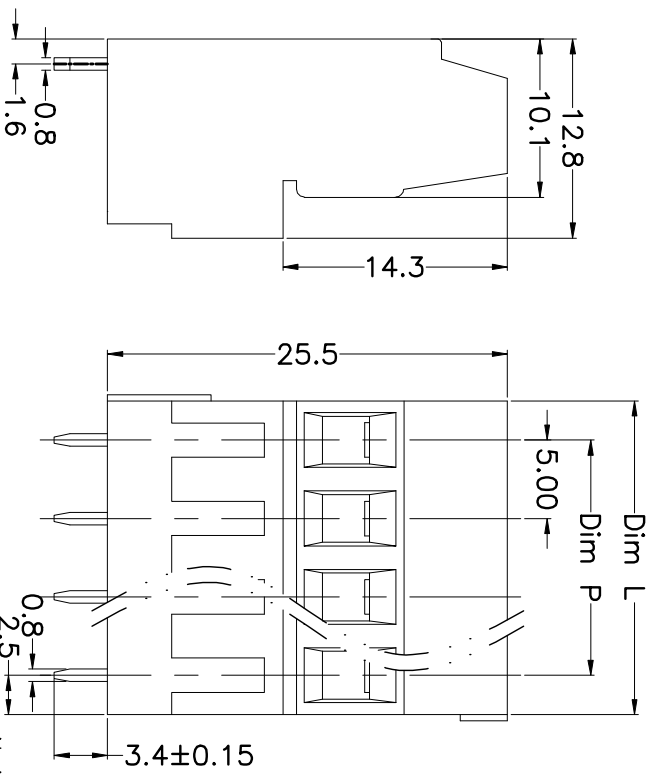
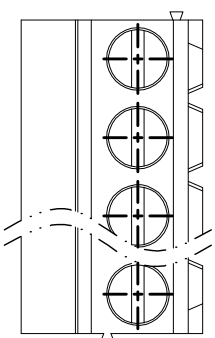


REV.	DESCRIPTION	DATE	DRAWN	APPROVED
A1	DWG.REL	2016/10/7	FANG	YANG



N=Number of Poles  
 Dim P=(N-1)x5.00  
 Dim L=Nx5.00

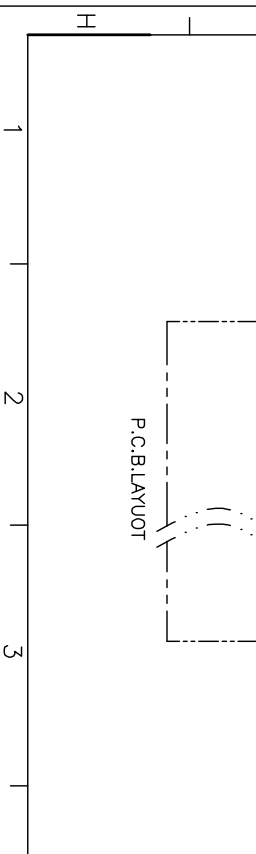
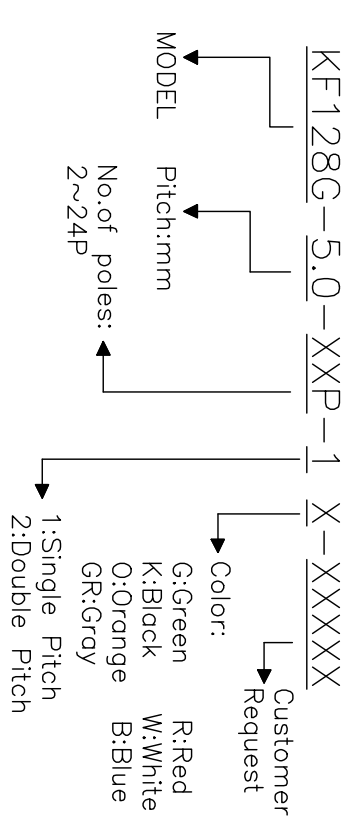
Poles	Dim P	Dim L
2-6P	±0.10	±0.15
7-12P	±0.20	±0.20
13-18P	±0.25	±0.30
19-24P	±0.30	±0.40

- Material
  - ①Screws : M2.5 steel, Zinc plated,
  - “-” slot type
  - ②Housing : PA66, UL94V-0
  - ③Clamp : Brass, Ni plated
  - ④Pin header : Brass, Tin plated

- Electrical
  - UL IEC
  - Rated voltage : 300V 250V
  - Rated current : 16A 24A
  - Insulation resistance: 500MΩ/DC500V
  - Withstanding Voltage : AC2000V/1min
  - Wire range: 24-14AWG 2.5mm<sup>2</sup>

- Mechanical
  - Operating temperature:-40℃~+105℃
  - Soldering temperature:250℃±5/5sec
  - Torque: 0.4N.m (3.54Lb.in)
  - Strip length: 6-7mm

### HOW TO ORDER



GENERAL TOLERANCE	ANGLE TOLERANCE
X. ±0.5 X. ±0.3 .XX ±0.1	X. ±5° X. ±3° .XX ±1°
DRAWING TYPE CUSTOMER	SHEET 1 OF 1
SCALE 1:1	DRAWING NO. XP0012016-xxxx

PROJECTION	TITLE
mm	KF128G-5.0-XXP
SHEET SIZE A4	SERIES KF128G

**KATRONG ELECTRONIC** **慈溪市凯峰电子有限公司** CIXI KAIFENG ELECTRONIC CO.,LTD