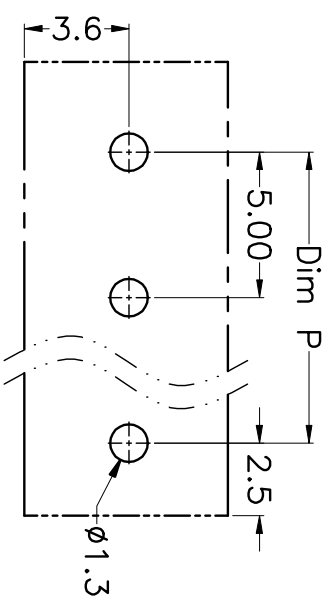
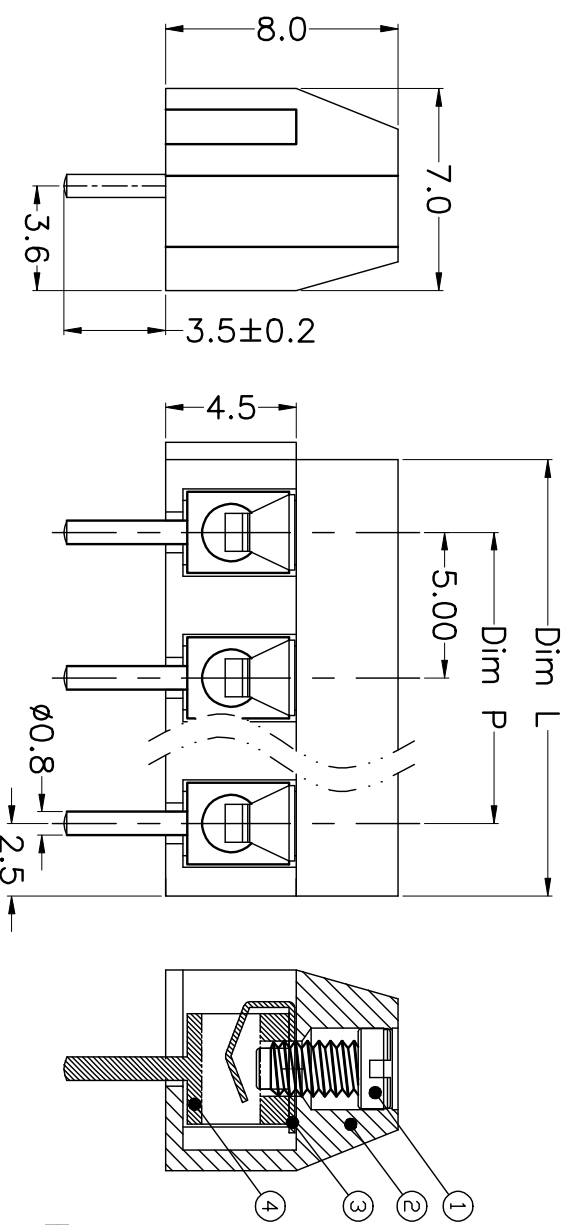
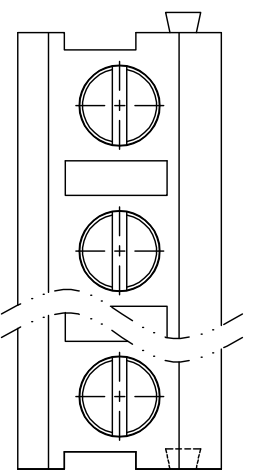


REV.	DESCRIPTION	DATE	DRAWN	APPROVED
A1	DWG.REL	2016/10/7	FANG	YANG



N=Number of Poles
Dim P=(N-1)x5.00
Dim L=Nx5.00

Poles	Dim P	Dim L
2-6P	±0.10	±0.15
7-12P	±0.20	±0.20
13-18P	±0.25	±0.30
19-24P	±0.30	±0.40

GENERAL TOLERANCE	ANGLE TOLERANCE	ANGLE TOLERANCE
X: ±0.5 X: ±0.3 .XX ±0.1	X: .X° X: .X° .XX ±1°	±5° ±3° ±1°
DRAWING TYPE: CUSTOMER	SHEET: 1 OF 1	
SCALE: 1:1		
DRAWING NO.: XP0012016-xxxx		

- Material
 - ①Screws : M2.0 steel, Zinc plated,
 - “-” slot type
 - ②Housing : PA66, UL94V-0
 - ③Reed : Phosphor bronze, Ni plated or stainless steel
 - ④Pin header : Brass, Tin plated

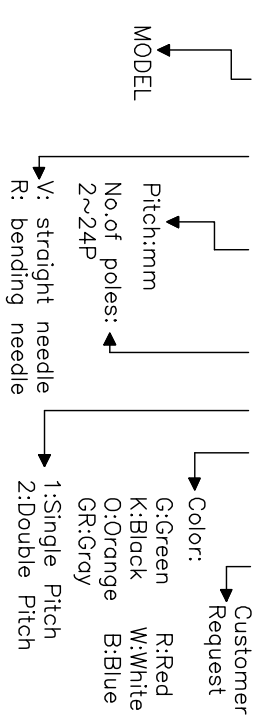
- Electrical

UL	IEC
Rated voltage : 300V	250V
Rated current : 10A	12A
Insulation resistance: 500MΩ/DC500V	
Withstanding Voltage : AC1500V/1min	
Wire range: 22-16AWG	1.5mm ²

- Mechanical
 - Operating temperature: -40°C~+105°C
 - Soldering temperature: 250°C±5/5sec
 - Torque: 0.2N.m (1.77Lb.in)
 - Strip length: 4.5-5mm

HOW TO ORDER

KF125 V -5.0-XXP-1 X-XXXXX



PROJECTION	TITLE
UNITS: mm	KF125V-5.0-XXP
SHEET SIZE: A4	SERIES: KF125V

KF 慈溪市凯峰电子有限公司
KAIFENG ELECTRONIC CIXI KAIFENG ELECTRONIC CO.,LTD